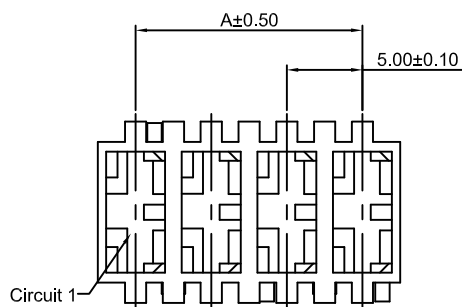
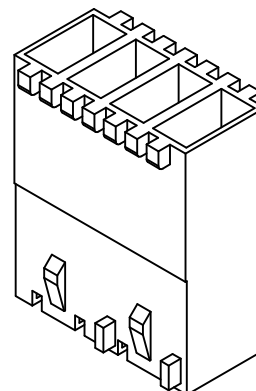


A7921HD-XP

5.00mm pitch Housing

Reference Informations:

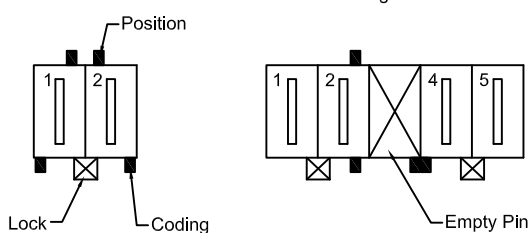
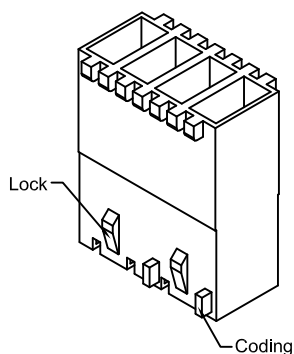
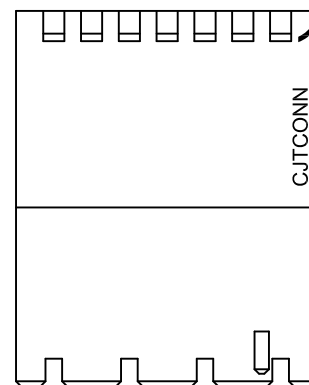
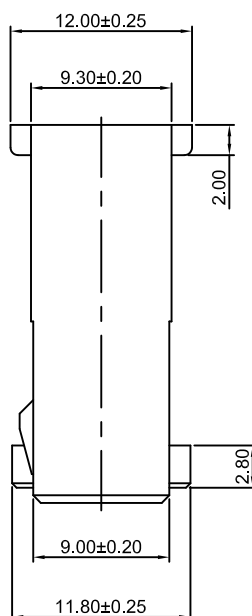
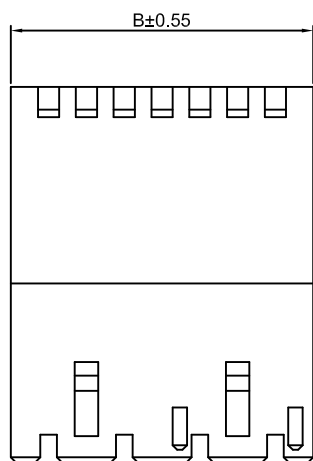
- *Material: Nylon 66, UL94V-0, GWT 750°C
- *Suitable CJT A7921-T-A(-L) , A7921-T-B(-L) series Terminal
- *Mates with CJT A7921WVA, WVB, WRA, WRA-R, WRA-RH, WRA-RH-F-XP series Wafer
- *Compliant IEC 60695-2-11 and IEC 60335-1(750°C, Flamme<2S)
- *Color: Ivory



Ordering Information:

A7921HD-XP - **
1 2

1. Part No.
2. Please find page 620~624 for details.



Ordering Information & Dimensions:

PART NO.	Dimensions	
	A	B
2P	5.00	10.00
3P	10.00	15.00
4P	15.00	20.00
5P	20.00	25.00
6P	25.00	30.00
7P	30.00	35.00
8P	35.00	40.00
9P	40.00	45.00
10P	45.00	50.00
11P	50.00	55.00
12P	55.00	60.00

Unit: mm

A7921HDA-XP

5.00mm pitch Housing

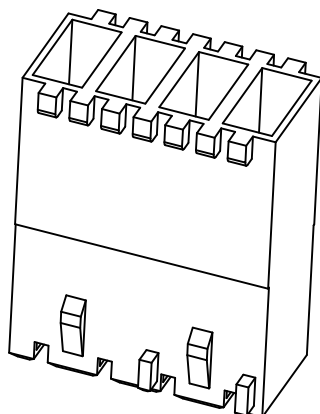
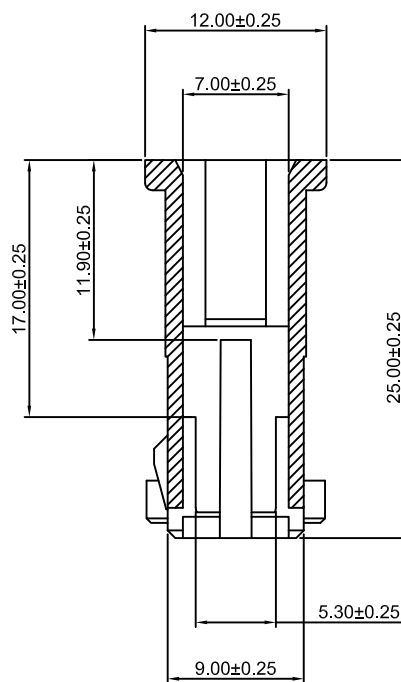
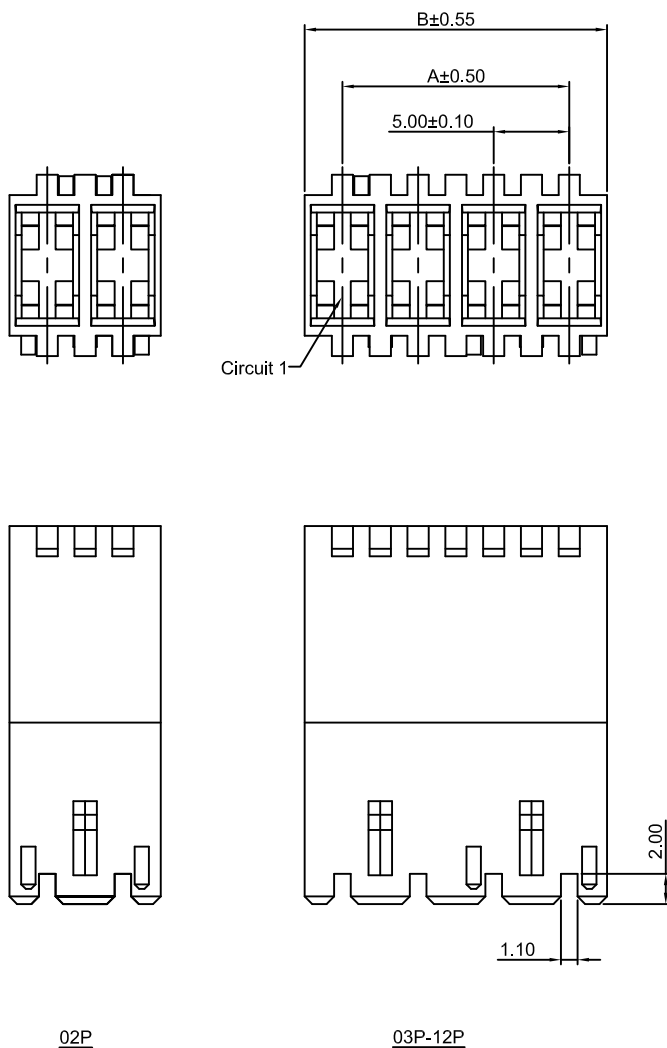
Reference Informations:

- *Material: Nylon 66, UL94V-0, GWT 750°C
- *Suitable CJT A7921-T-C series Terminal
- *Mates with CJT A7921WVA, WVB, WRA, WRA-R, WRA-RH, WRA-RH-F-XP series Wafer
- *Compliant IEC 60695-2-11 and IEC 60335-1(750°C, Flamme<2S)
- *Color: Ivory

Ordering Information:

A7921HDA-XP - **

1. Part No.
2. Please find page 620~624 for details.



Ordering Information & Dimensions:

PART NO.	Dimensions	
	A	B
2P	5.00	10.00
3P	10.00	15.00
4P	15.00	20.00
5P	20.00	25.00
6P	25.00	30.00
7P	30.00	35.00
8P	35.00	40.00
9P	40.00	45.00
10P	45.00	50.00
11P	50.00	55.00
12P	55.00	60.00

Unit: mm