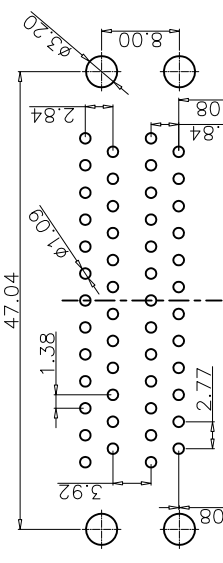
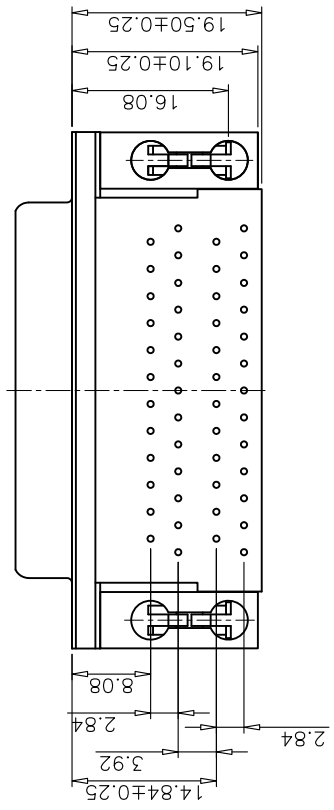
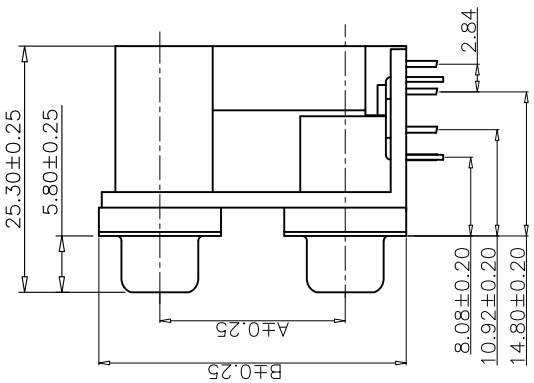
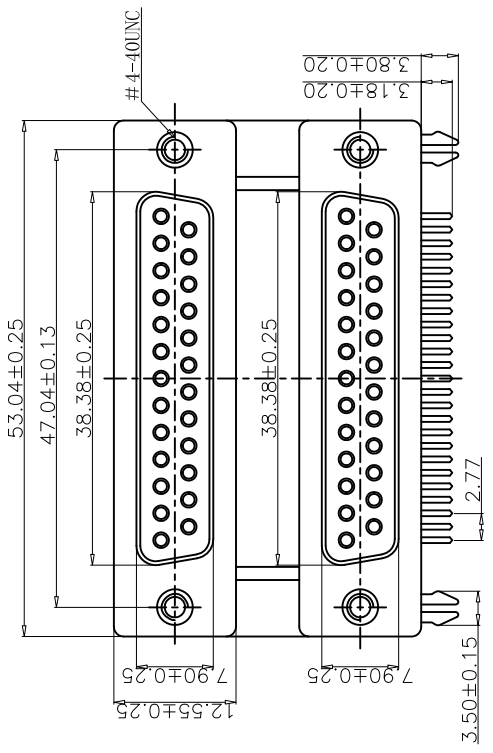


RoHS Compliant

REV. A0	ECN NO.	DESCRIPTION 新版本本	REVISER H.H.F	DATE 15.08.05
---------	---------	---------------------	------------------	------------------



RECOMMENDED PCB LAYOUT THICKNESS=1.6mm
TOLERANCE:±0.05

NOTE:

1. MATERIALS AND FINISHED INSULATOR : LCP OR PBT+30% GF UL 94V-0, SHELL : STEEL, NI FINISHED CONTACT MATERIAL:BRASS, SELEVITE GOLD FINISHED HARPOON:BRASS,SN FINISHED RIVET:COPPER ALLOY ,NI FINISHED WITH #4-40 THREADED ASSEMBLED
2. ELECTRICAL CHARACTERISTICS CURRENT RATING : 1.0 AMP DC VOLTAGE RATING: 300 V DC CONTACT RESISTANCE :20 MILLIOHMS MAX. DIELECTRIC WITHSTANDING VOLTAGE : 1000 V AC MIN. INSULATION RESISTANCE : 5000 MEGOHMS MIN. ENVIRONMENTAL OPERATING TEMPERATURE: -55°C ~ +85°C STORAGE TEMPERATURE:-55°C ~ +105°C
3. HOW TO ORDER:

DL 0 0 1 X-50 X X X 1-A 0 3 2 0

SERIES: FEMALE+FEMALE
DR+DR
SPACING BETWEEN PORTS: 1:0.625(15.88mm) 2:0.75(19.05mm) 50:25pin+25pin

TOP+BOTTOM PIN NUMBER

CONTACT FINISH 1: S:Selevite Gold Bright TIN M:Selevite Gold Matte TIN

CONTACT FINISH 2: 1:1u" 3:3u" 2:2u" 6:10u"

FRONT SHELL FINISH: 3:FULL SN 4:FULL GOLD 5:FULL NI

COLOR STYLE: 1:BLACK+BLACK 8:GREEN+BLACK(LJZ:BLACK) 9:GREEN+GREEN

INSULATOR MATERIALS: 1:PBT+PBT 2:LCP+PBT

MOUNTING OPTION: A:No screw type B:Assy screw type C:Attach screw type

BOARD MOUNTING OPTION: 3:QUAD ARROWHEAD HARPOON(8.08*8.0) WITH BRACKET.

BOTTOM CONNECTOR TYPE: 2:8.08

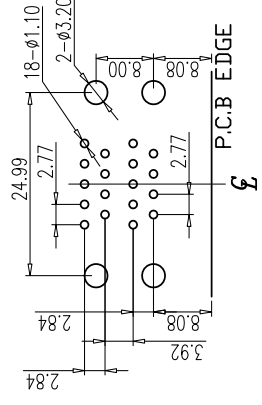
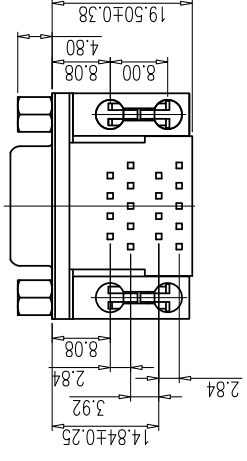
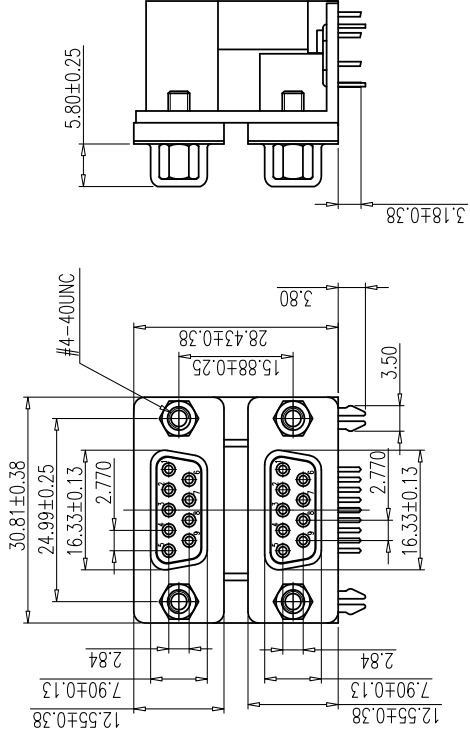
DIM A	DIM B
15.88	28.43
19.05	31.60

CELION SAS

?? (Scale):1:1	?? (DWG NO.)
?? (Unit):mm	?? (Design)
?? ? ? ? ?	?? (Checked)
Tolerance Unspecified	?? (Approved)
X, ±0.25	?? (Sheet)
XX, ±0.20	1 OF 1
XXX, ±0.10	⊕
XXX, ±0.05	?? (Rev.):A0
X, ±	
XX, ±1	
XX, ±0.5	

DR 25母对DR 25母8.08, 柳合鱼叉


DL001X-50XXXX1-A0320



RECOMMENDED P.C.B LAYOUT

NOTE:
 1.MATERIALS AND FINISHED INSULATOR : LCP OR PBT+30% GF UL 94V-0, SHELL : STEEL, NI FINISHED CONTACT MATERIAL:BRASS, SELEVITE GOLD FINISHED HARPOON:BRASS,SN FINISHED BRACKET:ZINC ALLOY,NI FINISHED2.ELECTRICAL CHARACTERISTICS CURRENT RATING : 1.0 AMP DC VOLTAGE RATING: 300 V DC CONTACT RESISTANCE :20 MILLIOHMS MAX. DIELECTRIC WITHSTANDING VOLTAGE : 1000 V AC MIN. INSULATION RESISTANCE : 5000 MEGAOHMS MIN. 3.ENVIRONMENTAL OPERATING TEMPERATURE: -55°C ~ +85°C STORAGE TEMPERATURE:-55°C ~ +105°C 4.HOW TO ORDER:

- DL0011-18XXXX1-BX320**
- FEMALE+FEMALE
 - DR+DR
 - 1:0.625(15.88mm)
 - 2:0.75 (19.05mm)
 - 18:9+9PIN
 - S: Selevite Gold Bright TIN
 - M: SELEVITE GOLD MATTE TIN
 - 1:1u" 3: 3u" 2:2u" 6: 10u"
 - 4. FULL Gold 5. FULL NI
 - 0: Rohs
 - 2:8.08 BOARD MOUNTING OPTION
 - 3:BRACKET WITH QUAD ARROWHEAD HARPOON(8.08*8.0)
 - 0:None
 - 5:4.8*11.8 copper screw
 - 6:4.8*11.8 steel screw
 - J:5.8*13.0 copper screw
 - K:5.8*13.0 steel screw
 - B:Ass'y screw type
 - 1:PBT+PBT
 - 1:BLACK+BLACK

		PART NO.	DL0011-18XXXX1-BX320	DRAWN	MARK
voire partenaire en électronique		DWG NO.		CHECK	JOHN
0.625" DR 9母架DR-9母8.08 铆合支架+鱼叉(8.08*8.0) 铆螺丝		TOLERANCE	X:±0.30 X:±0.25	APPROVE	MELODY
TITLE: REV. A0			.XX±0.15 .XXX±0.10	SCALE 1:1	UNIT mm
					NO
					DESCRIPTION