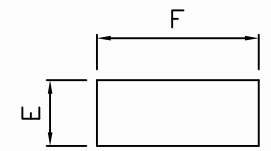
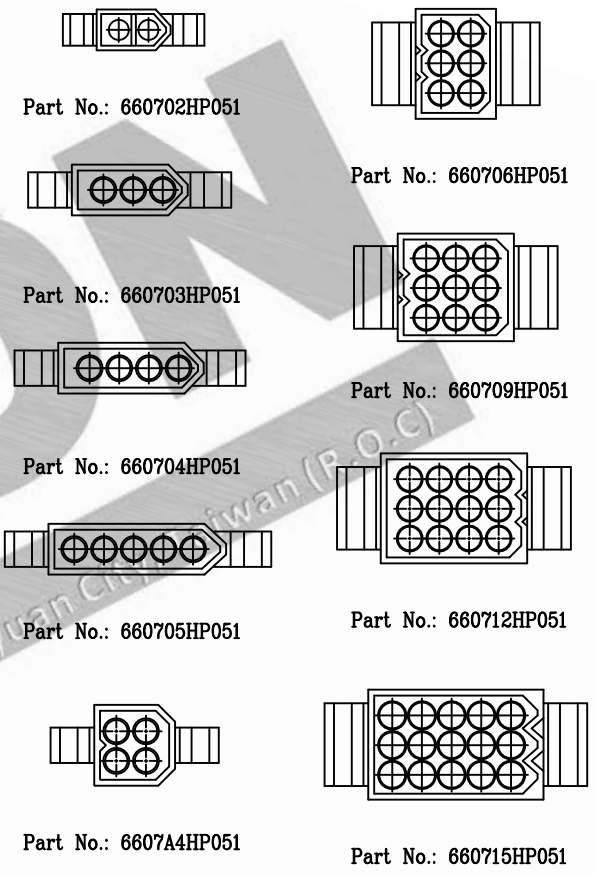
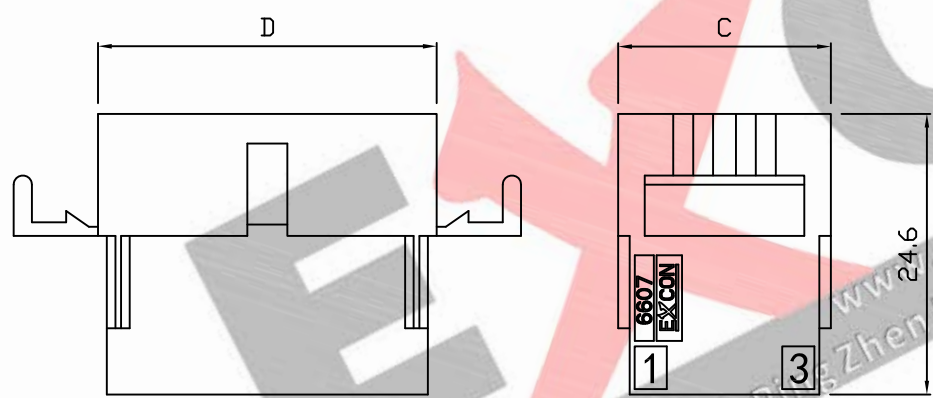
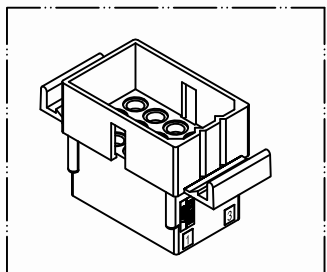
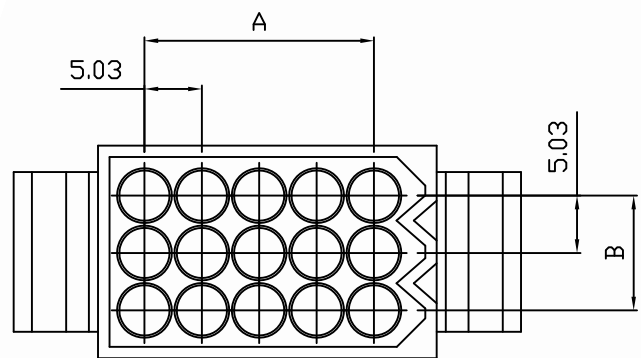


PART NO. 6607xxHP051
 DWG NO. C6607HP



NOTE:

1. Wafer Material: Nylon 66 UL94 V2
2. Insulation resistance: 1000M ohm/min.
3. Withstand voltage: 1500V AC/minute.
4. Current retang: 5A AC/DC.
5. Voltage rating: 600V AC/DC
6. Color: Natural

Dimensional & Ordering Information:

| Part No. | Circuits | Dim A | Dim B | Dim C | Dim D | Dim E | Dim F |
|-------------|----------|-------|-------|-------|-------|-------|-------|
| 660702HP051 | 2 | 5.03 | --- | 8.6 | 13.63 | 9.53 | 18.67 |
| 660703HP051 | 3 | 10.06 | --- | 8.6 | 18.66 | 9.53 | 23.70 |
| 660704HP051 | 4 | 15.09 | --- | 8.6 | 23.69 | 9.53 | 28.73 |
| 6607A4HP051 | 4 | 5.03 | 5.03 | 13.63 | 13.63 | 14.56 | 14.50 |
| 660705HP051 | 5 | 20.12 | --- | 8.60 | 28.72 | 9.53 | 33.76 |
| 660706HP051 | 6 | 5.03 | 10.06 | 18.66 | 13.63 | 19.59 | 18.67 |
| 660709HP051 | 9 | 10.06 | 10.06 | 18.66 | 18.66 | 19.59 | 23.70 |
| 660712HP051 | 12 | 15.09 | 10.06 | 18.66 | 23.69 | 19.59 | 28.73 |
| 660715HP051 | 15 | 20.12 | 10.06 | 18.66 | 28.72 | 19.59 | 33.76 |

| | | | | | |
|-------|-----------|------|------------------------|--|--|
| REV. | REVISIONI | DIS | DATE | UNLESS OTHERWISE SPECIFIED TOLERANCES 3 PLACE ±0.5 ±0.10 2 PLACE ±1.5 ±0.25 1 PLACE ±2.0 ±0.50 ANGLE DIM | EXCON EXCON TECHNOLOGY COMPANY |
| SCALE | REV. | PAGE | UNIT | DWG NO: | |
| 1/1 | A | 1/2 | THIRD ANGLE PROJECTION | C6607HP | PART.NO 6607xxHP051 |