

BOARD TO BOARD CONNECTOR FEMALE

3721 SERIES - 0.6MM PITCH



Specifications

- Electrical rating: AC/DC 50V 0.5A
- Insulation resistance: 500MΩ min
- Withstand Voltage: 200V AC/minute
- Operation temperature: -40°C to +105°C

Material

- Contact material: Phosphore bronze Gold plated
- Housing: LCP

Ordering Information

3721F - XXX - 23 X (X)

1
2
3
4
5

1. Connector Series

2. Number of pins per row (60,80,100P)

3. Plastic height

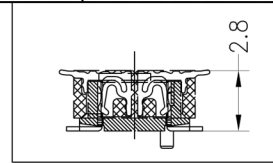
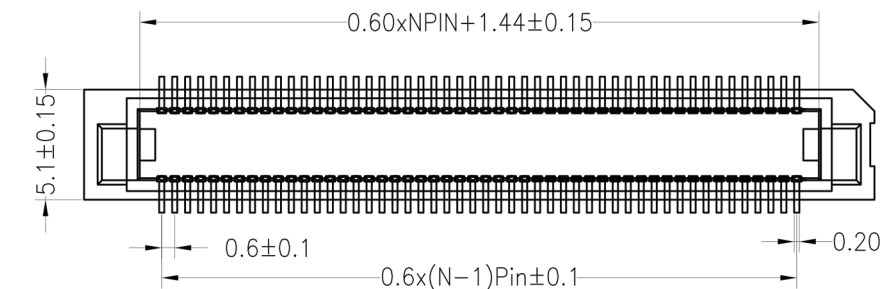
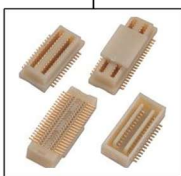
- 23 = 2.35mm

4. Contact Plating

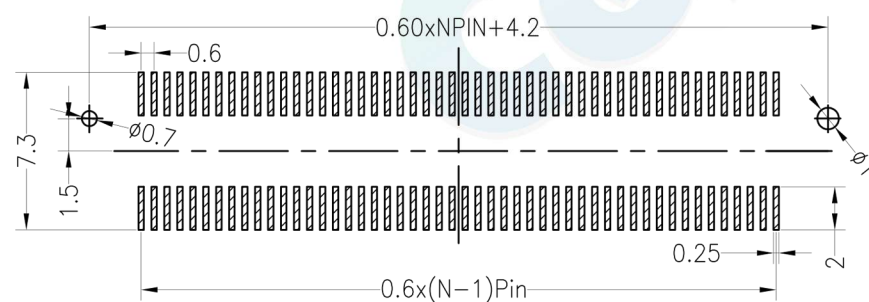
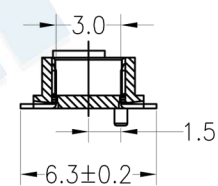
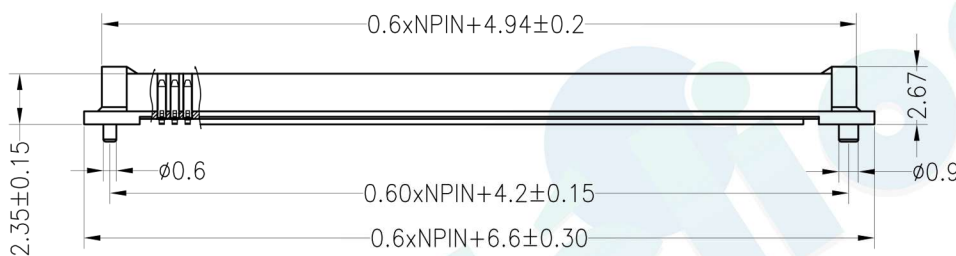
- A= Gold Flash
- B= 3U" Gold
- C= 5U" Gold
- D= 10U" Gold
- E= 15U" Gold
- F= 30U" Gold
- G= Gold Flash/Tin

5. Packaging


- T = Tube
- R = Reel



ASSEMBLY



Recommended P.C.B Layout(Top Side)
(PCB BOARD TOLERANCE±0.05)

				OPERATION		DRAW	BEN	12.04.18	SCALE	FIT	 votre partenaire en électronique		
				X.X	±0.30				UNIT	mm			
				X.XX	±0.20	CHECK	SIZE	A4	PART NO.	3721F-XXX-23X (X)			
				X.XXX	±0.10	APPROVE	SHEET	1/1	TITLE:	0.6BTB NPin H2.35 Female			
REV	DATE	MODIFICATION DESCRIPTION	CHANGE	Angle	±3°				PROJ.				
1	2012.04.18	NEW DRAWING		DIM	TOL								