

BOARD TO BOARD CONNECTOR MALE

3720 SERIES - 0.5MM PITCH



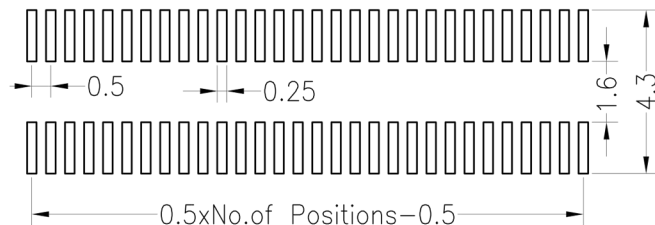
Recommended P.C.B Layout (Top Side)
(PCB BOARD TOLERANCE ±0.05)

Specifications

- Electrical rating: AC/DC 50V 0.5A
- Insulation resistance: 500MΩ min
- Withstand Voltage: 200V AC/minute
- Operation temperature: -40°C to +105°C

Material

- Contact material: Phosphore bronze Gold plated
- Housing: LCP

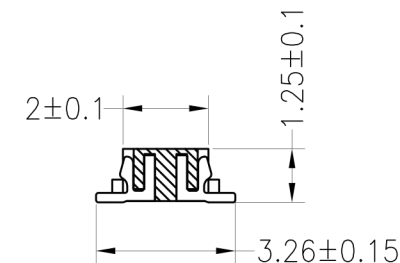
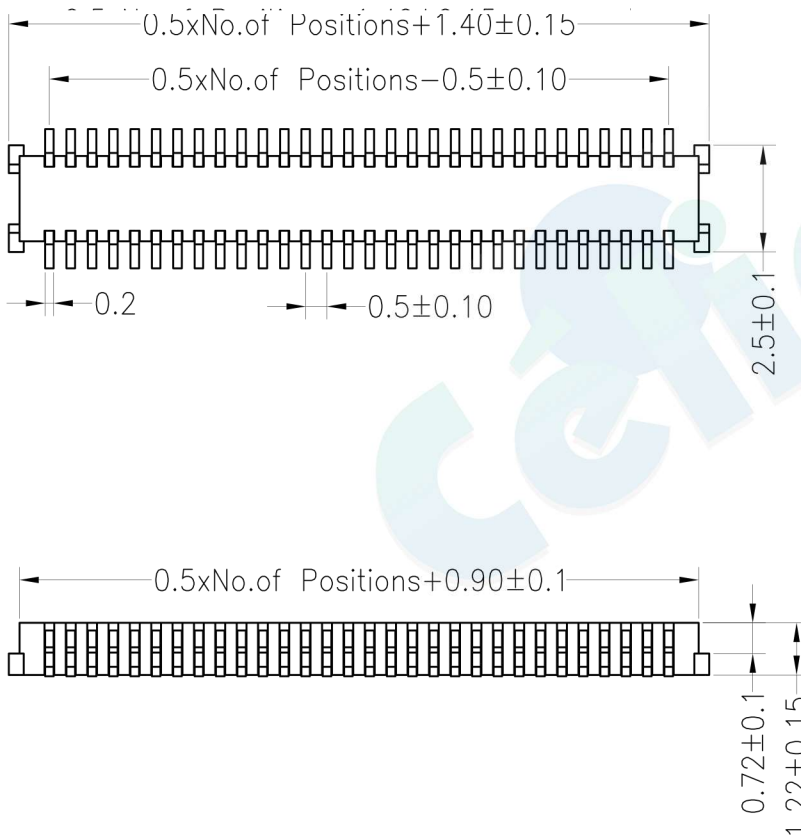
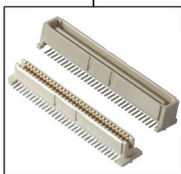


Ordering Information

3720M - XXX - 12 X (X) 02

1
2
3
4
5

- 1. Connector Series**
- 2. Number of pins per row (20→100P)**
- 3. Plastic height**
 - 12 = 1.2mm
- 4. Contact Plating**
 - A= Gold Flash
 - B= 3U" Gold
 - C= 5U" Gold
 - D= 10U" Gold
 - E= 15U" Gold
 - F= 30U" Gold
 - G= Gold Flash/Tin
- 5. Packaging**
 - T = Tube
 - R = Reel



				OPERATION		DRAW	BEN	12.04.18	SCALE	FIT	votre partenaire en électronique			
				X.X	±0.30				UNIT	mm				
				X.XX	±0.20	CHECK	SIZE	A4	PART NO.	3720M-XXX-12X (X) 02				
				X.XXX	±0.10	APPROVE	SHEET	1/1	TITLE:	0.5BTB NPin H1.2 Male				
REV	DATE	MODIFICATION DESCRIPTION	CHANGE	DIM	TOL	PROJ.								