

BOARD TO BOARD CONNECTOR MALE

3720 SERIES - 0.5MM PITCH



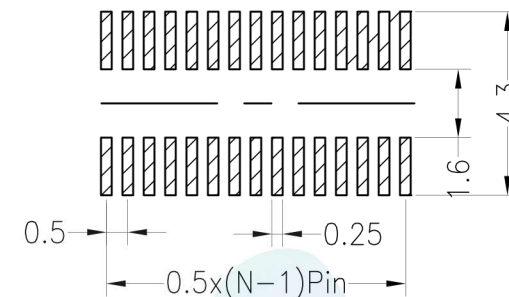
Specifications

- Electrical rating: AC/DC 50V 0.5A
- Insulation resistance: 500MΩ min
- Withstand Voltage: 200V AC/minute
- Operation temperature: -40°C to +105°C

Material

- Contact material: Phosphore bronze Gold plated
- Housing: LCP

Recommended P.C.B Layout (Top Side)
(PCB BOARD TOLERANCE ±0.05)



Ordering Information

3720M - XXX - 12 X (X) 01

1
2
3
4
5

1. Connector Series

2. Number of pins per row (20 → 100P)

3. Plastic height

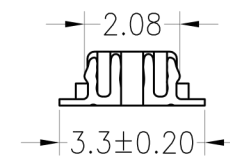
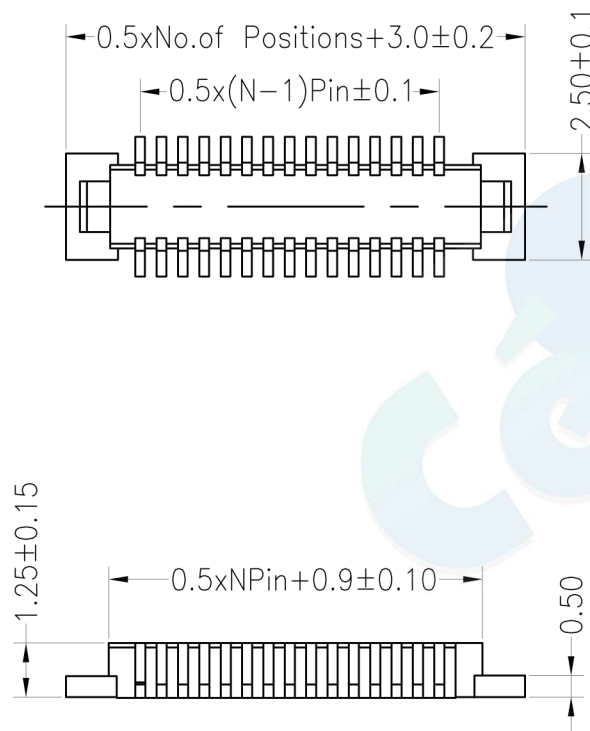
- 12 = 1.25mm

4. Contact Plating

- A= Gold Flash
- B= 3U" Gold
- C= 5U" Gold
- D= 10U" Gold
- E= 15U" Gold
- F= 30U" Gold
- G= Gold Flash/Tin

5. Packaging

- T = Tube
- R = Reel



				OPERATION		DRAW	BEN	12.04.18	SCALE	FIT	votre partenaire en électronique		
				X.X	±0.30				UNIT	mm			
				X.XX	±0.20	CHECK		SIZE	A4	PART NO.			3720M-XXX-12X (X) 01
				X.XXX	±0.10	APPROVE		SHEET	1/1	TITLE:			0.5BTB NPin H1.25 Male
REV	DATE	MODIFICATION DESCRIPTION	CHANGE	DIM	TOL			PROJ.					