

# FEMALE HEADER ROUND PIN SMT SINGLE ROW

## 3620 SERIES - 2.54MM PITCH



### Technical Specs

- Insulator: Black Glass filled polyester PPS-GF30-FR
- Flammability: UL94V-O
- Sleeve: Brass CuZn36Pb3 (C36000)
- Contact clip (4 finger): Beryllium copper (C17200)
- Accepted pin: Ø0.40 to 0.56mm
- Mechanical life: min 500 cycles
- Rated Current: 3A
- Forces: (polished steel gauge Ø0.43mm)
  - Insertion 2 N typ
  - Withdrawal 1 N typ
- Contact Resistance: max 10mΩ
- Dielectric Resistance: min 1000MΩ
- Coplanarity SMD terminations: max 0.1mm (measured on 25mm long connectors)

### Ordering Information

**3620S1 - 30 (XX) - AAA B (1)**

#### 1. Connector Series

#### 2. (H) Hauteur isolant

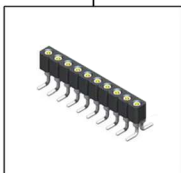
- H = 30 (Hauteur isolant : 3.0mm)

#### 3. Number of pins per row

#### 4. Pin Length (074 = 7.4mm)

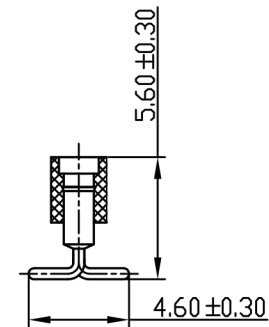
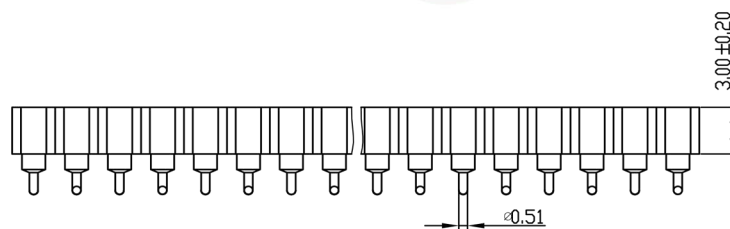
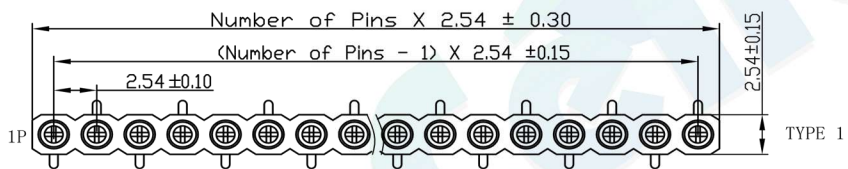
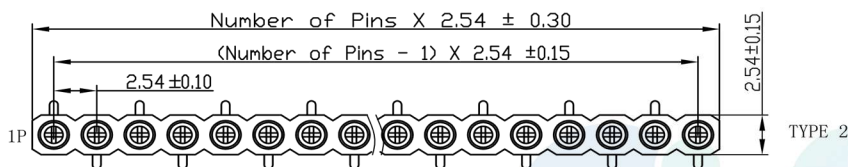
#### 5. Contact Plating

- A = Tin
- B = Gold Flash (\*Standard)
- C = 2U" Gold
- D = 3U" Gold
- E = 5U" Gold
- F = 10U" Gold
- G = Gold Flash/Tin



#### (1). Packaging

Ø=PE Bag 1=Tube 2=Reel



				OPERATION		DRAW	BEN	12.04.18	SCALE	FIT	 votre partenaire en électronique	
				X.X	±0.30				UNIT	mm		
				X.XX	±0.20	CHECK			SIZE	A4	PART NO.	3620S1 - 30XX - XXXX
				X.XXX	±0.10				SHEET	1/1		
A0	2012.04.18	NEW DRAWING		Angle	±3°	APPROVE			PROJ.		TITLE:	2.54X3.0 Machine Female Header SMT L=7.4
REV	DATE	MODIFICATION DESCRIPTION		DIM	TOL							

# FEMALE HEADER ROUND PIN SMT SINGLE ROW

## 3620 SERIES - 2.54MM PITCH



### Technical Specs

- Insulator: Black Glass filled polyester PPS
- Flammability: UL94V-O
- Sleeve: Brass
- Contact clip (6 finger): Beryllium copper (C17200)
- Accepted pin: Ø0.70 to 0.90mm, 0.635mm
- Mechanical life: min 500 cycles
- Rated Current: 3A
- Forces: (polished steel gauge Ø0.76mm)
  - Insertion 2 N typ
  - Withdrawal 1 N typ
- Contact Resistance: max 10mΩ
- Dielectric Resistance: min 1000MΩ
- Coplanarity SMD terminations: max 0.1mm  
(measured on 25mm long connectors)

### Ordering Information

**3620S1 - 70 (XX) - AAA B (1)**

#### 1. Connector Series

#### 2. (H) Hauteur isolant

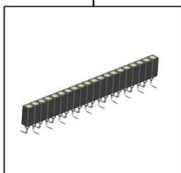
- H = 70 (Hauteur isolant : 7.0mm)

#### 3. Number of pins per row

#### 4. Pin Length (124 = 12.4mm)

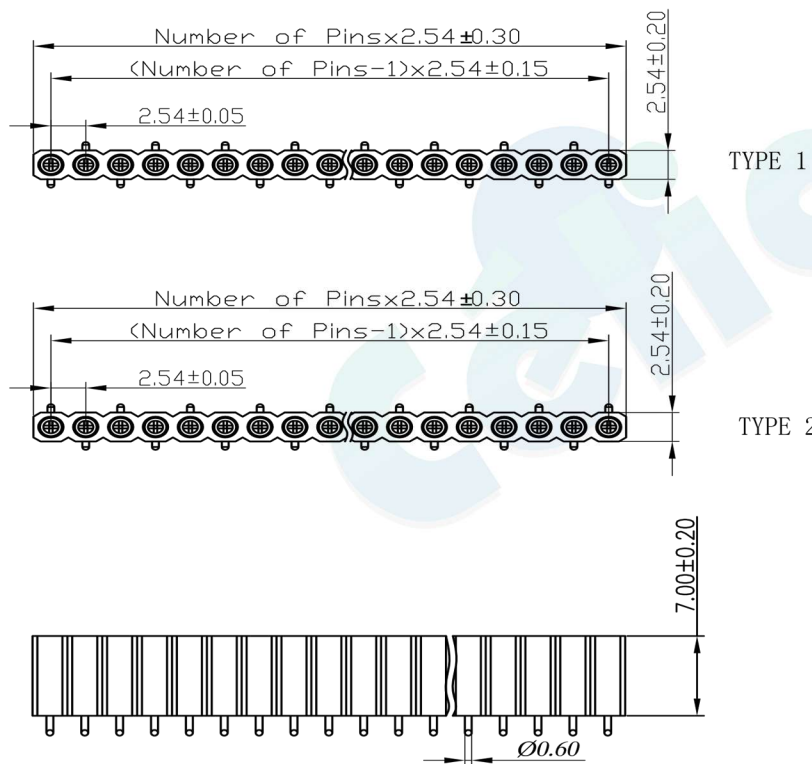
#### 5. Contact Plating

- A = Tin
- B = Gold Flash (\*Standard)
- C = 2U" Gold
- D = 3U" Gold
- E = 5U" Gold
- F = 10U" Gold
- G = Gold Flash/Tin



#### (1). Packaging

Ø=PE Bag 1=Tube 2=Reel



TYPE 1

TYPE 2

				OPERATION		DRAW	BEN	12.04.18	SCALE	FIT	 votre partenaire en électronique	
				X.X	±0.30				CHECK	UNIT		
				X.XX	±0.20	SIZE	A4					
				X.XXX	±0.10	SHEET	1/1					
A0	2012.04.18	NEW DRAWING		Angle	±3°	APPROVE		PROJ.	◆	PART NO.	3620S1 - 70XX - XXXX	
REV	DATE	MODIFICATION DESCRIPTION		DIM	TOL					TITLE:	2.54x7.0 Machine Female Header SMT L=10.0	