

FEMALE HEADER ROUND PIN DIP RIGHT ANGLE SINGLE ROW

3620 SERIES - 2.54MM PITCH



Technical Specs

- Insulator: Black Glass filled polyester PPS
- Flammability: UL94V-O
- Sleeve: Brass
- Contact clip (4/6 finger): Beryllium copper (C17200)
- Accepted pin: $\varnothing 0.40$ to 0.56mm
- Mechanical life: min 500 cycles
- Rated Current: 3A
- Forces: (polished steel gauge $\varnothing 0.43\text{mm}$)
 - Insertion 2 N typ
 - Withdrawal 1 N typ
- Contact Resistance: max $10\text{m}\Omega$
- Dielectric Resistance: min $1000\text{M}\Omega$
- Coplanarity SMD terminations: max 0.1mm
(measured on 25mm long connectors)

Ordering Information

3620DR1 - 30 (XX) - AAA B

1
2
3
4
5

1. Connector Series

2. (H) Hauteur isolant

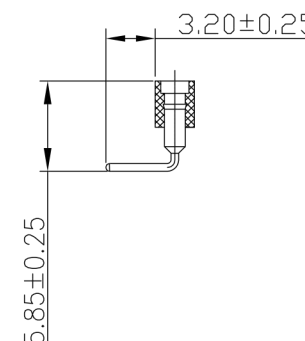
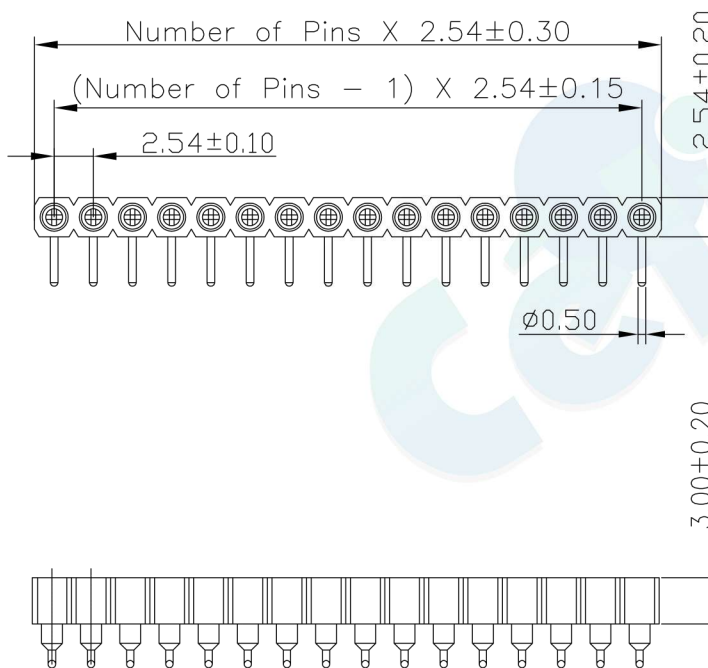
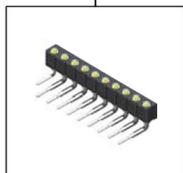
- H = 30 (Hauteur isolant : 3.0mm)

3. Number of pins per row

4. Pin Length (074 = 7.4mm)

5. Contact Plating

- A = Tin
- B = Gold Flash (*Standard)
- C = 2U" Gold
- D = 3U" Gold
- E = 5U" Gold
- F = 10U" Gold
- G = Gold Flash/Tin



				OPERATION		DRAW	BEN	12.04.18	SCALE	FIT	votre partenaire en électronique		
				X.X	± 0.30				UNIT	mm			
				X.XX	± 0.20	CHECK		SIZE	A4	PART NO.			3620DR1 - 30XX - XXXX
				X.XXX	± 0.10	APPROVE		SHEET	1/1	TITLE:			2.54x3.0 Machine Female Header/90° L=9.85
REV	DATE	MODIFICATION DESCRIPTION	CHANGE	DIM	TOL			PROJ.					

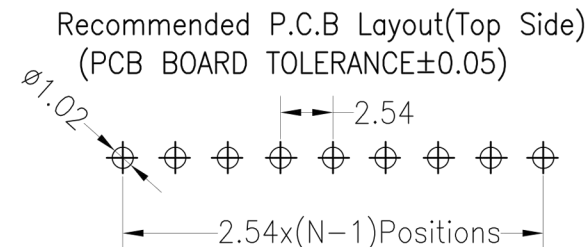
FEMALE HEADER ROUND PIN DIP RIGHT ANGLE SINGLE ROW

3620 SERIES - 2.54MM PITCH



Technical Data

- Insulator: Black Glass filled polyester PPS or PBT
- Flammability: UL94V-O
- Sleeve: Brass
- Contact clip (6 finger): Beryllium copper
- Mating pin: Ø0.70 to Ø0.90mm
- Forces: (polished steel gauge Ø0.76mm)
- Mechanical life: min 500 cycles
- Current rating: 3Amps/Contact max
- Contact Resistance: max 10mΩ
- Dielectric Strength: min 1000MΩ
- Operating temperature: -55°C to +105°C
- Soldering temperature: +245°C ±5°C, 5s max



Ordering Information

3620DR1 - 70 (XX) - AAA B

1. Connector Series

2. (H) Hauteur isolant

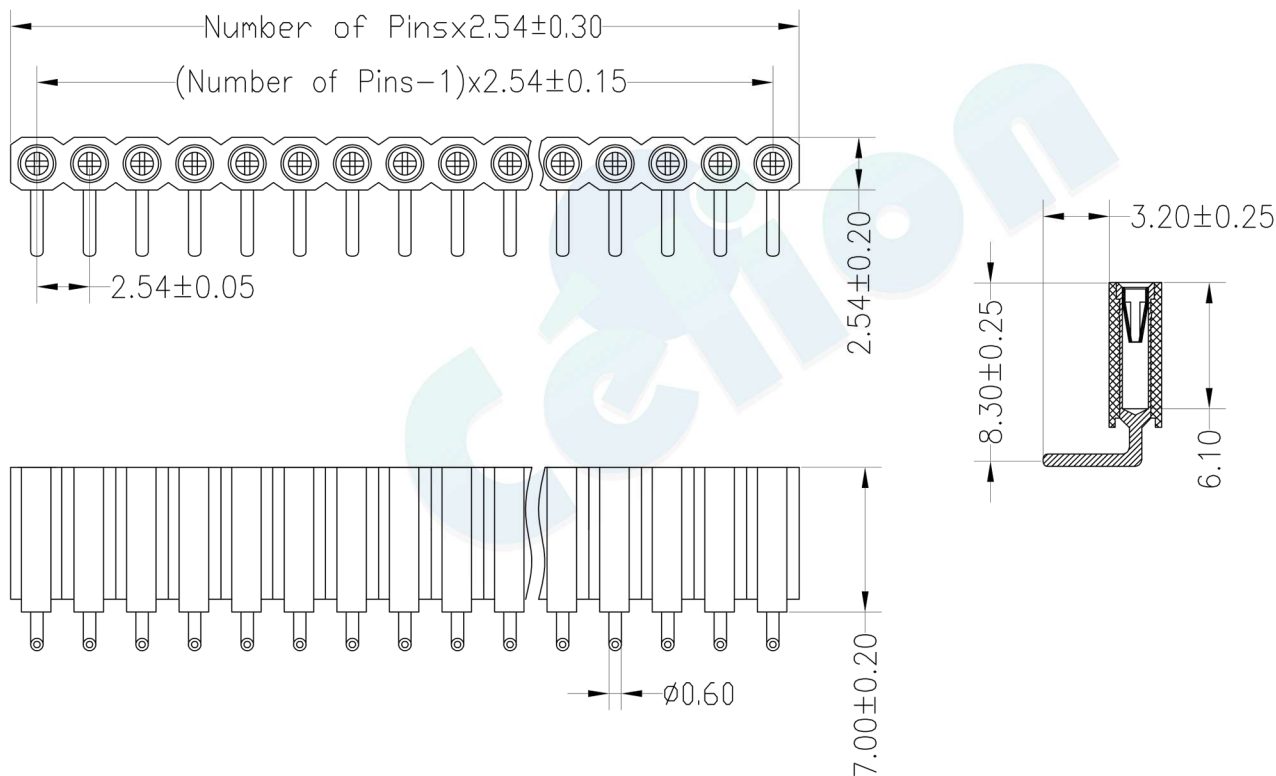
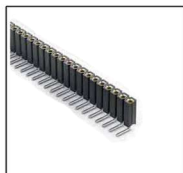
- H = 70 (Hauteur isolant : 7.0mm)

3. Number of pins per row

4. Pin Length (124 = 12.4mm)

5. Contact Plating

- A = Tin
- B = Gold Flash (*Standard)
- C = 2U" Gold
- D = 3U" Gold
- E = 5U" Gold
- F = 10U" Gold
- G = Gold Flash/Tin



				OPERATION		DRAW	BEN	12.04.18	SCALE	FIT	 votre partenaire en électronique		
				X.X	±0.30				UNIT	mm			
				X.XX	±0.20	CHECK		SIZE	A4	PART NO.			3620DR1 - 70XX - XXXX
				X.XXX	±0.10			SHEET	1/1	TITLE:			2.54x7.0 Machine Female Header 90° L=12.4
A0	2012.04.18	NEW DRAWING		Angle	±3°	APPROVE		PROJ.					
REV	DATE	MODIFICATION DESCRIPTION		DIM	TOL								

FEMALE HEADER ROUND PIN DIP RIGHT ANGLE DUAL ROW

3620 SERIES - 2.54MM PITCH



Technical Specs

- Insulator: Black Glass filled polyester PPS
- Flammability: UL94V-O
- Sleeve: Brass
- Contact clip (4/6 finger): Beryllium copper (C17200)
- Accepted pin: $\varnothing 0.40$ to 0.56mm
- Mechanical life: min 500 cycles
- Rated Current: 3A
- Forces: (polished steel gauge $\varnothing 0.43\text{mm}$)
 - Insertion 2 N typ
 - Withdrawal 1 N typ
- Contact Resistance: max $10\text{m}\Omega$
- Dielectric Resistance: min $1000\text{M}\Omega$
- Coplanarity SMD terminations: max 0.1mm
(measured on 25mm long connectors)

Ordering Information

3620DR2 - 30 (XX) - AAA B

1
2
3
4
5

1. Connector Series

2. (H) Hauteur isolant

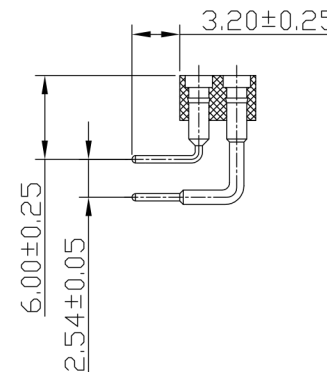
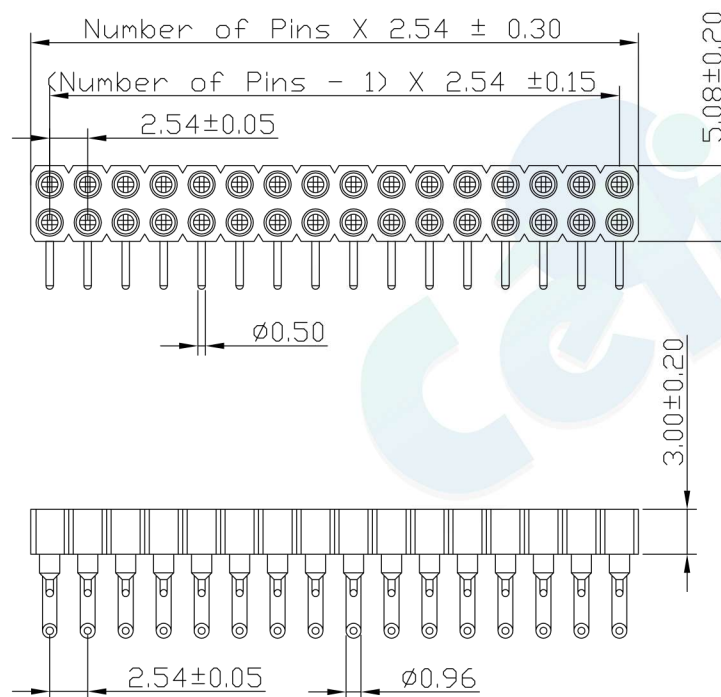
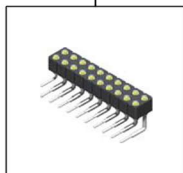
- H = 30 (Hauteur isolant : 3.0mm)

3. Number of pins per row

4. Pin Length (074 = 7.4mm)

5. Contact Plating

- A = Tin
- B = Gold Flash (*Standard)
- C = 2U" Gold
- D = 3U" Gold
- E = 5U" Gold
- F = 10U" Gold
- G = Gold Flash/Tin



				OPERATION		DRAW	BEN	12.04.18	SCALE	FIT	votre partenaire en électronique	
				X.X	± 0.30							
				X.XX	± 0.20	APPROVE			SIZE	A4	PART NO.	3620DR2 - 30XX - XXXX
				X.XXX	± 0.10							
REV	DATE	MODIFICATION DESCRIPTION	CHANGE	DIM	TOL	PROJ.						

FEMALE HEADER ROUND PIN DIP RIGHT ANGLE DUAL ROW

3620 SERIES - 2.54MM PITCH



Technical Specs

- Insulator: Black Glass filled polyester PPS-GF30-FR
 - Flammability: UL94V-O
 - Sleeve: Brass
 - Contact clip (6 finger): Beryllium copper (C17200)
 - Accepted pin: $\varnothing 0.70$ to 0.90mm , 0.635mm
 - Mechanical life: min 500 cycles
 - Rated Current: 3A
 - Forces: (polished steel gauge $\varnothing 0.76\text{mm}$)
 - Insertion 2 N typ
 - Withdrawal 1 N typ
 - Contact Resistance: max $10\text{m}\Omega$
 - Dielectric Resistance: min $1000\text{M}\Omega$
 - Coplanarity SMD terminations: max 0.1mm
- (measured on 25mm long connectors)

Ordering Information

3620DR2 - 70 (XX) - AAA B

1
2
3
4
5

1. Connector Series

2. (H) Hauteur isolant

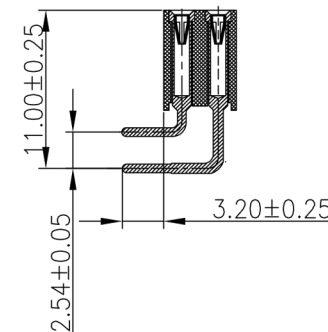
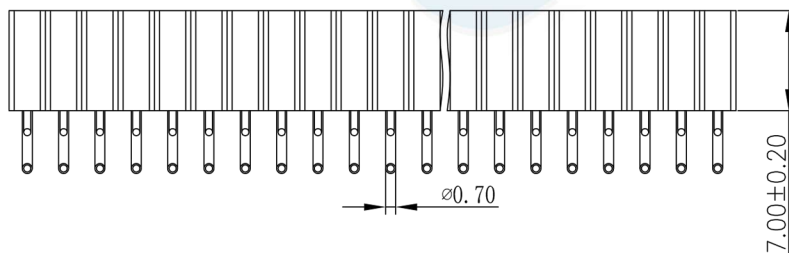
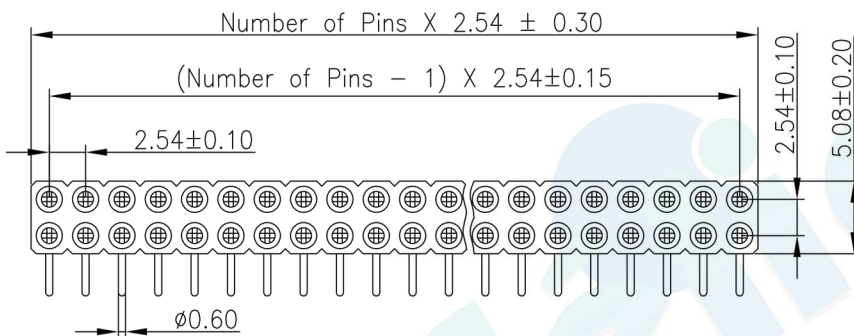
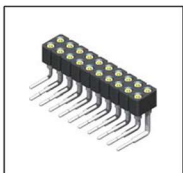
- H = 70 (Hauteur isolant : 7.0mm)

3. Number of pins per row

4. Pin Length ($124 = 12.4\text{mm}$)

5. Contact Plating

- A = Tin
- B = Gold Flash (*Standard)
- C = 2U" Gold
- D = 3U" Gold
- E = 5U" Gold
- F = 10U" Gold
- G = Gold Flash/Tin



				OPERATION		DRAW	BEN	12.04.18	SCALE	FIT	votre partenaire en électronique	
				X.X	±0.30							
				X.XX	±0.20	APPROVE			SIZE	A4	PART NO.	3620DR2 - 70XX - XXXX
				X.XXX	±0.10							
A0	2012.04.18	NEW DRAWING		Angle	±3°	PROJ.		TITLE:	2.54x7.0 Machine Female Header 90° L=12.4/17.4mm			
REV	DATE	MODIFICATION DESCRIPTION	CHANGE	DIM	TOL							