

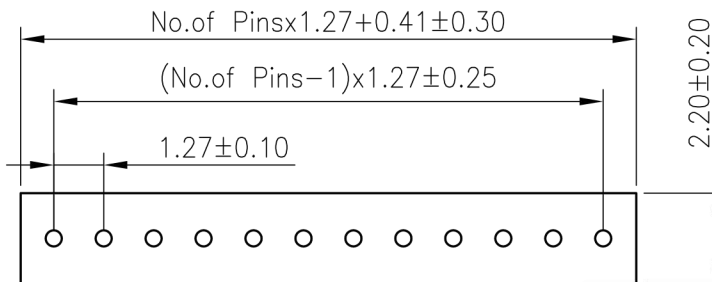
# ROUND PIN HEADER SMT RIGHT ANGLE SINGLE ROW

## 3614 SERIES - 1.27MM PITCH



### Technical Data

- Insulator : Black Glass filled polyester PPS-GF30-FR
- Flammability : UL94V-O
- Sleeve : Brass
- Accepted pin :  $\varnothing 0.41\text{mm}$
- Mechanical life : min 500 cycles
- Rated current : 1A
- Dielectric resistance : Min 1000V RMS
- Coplanarity SMD
- Terminations : Max 0.1mm (measured on 25mm long connectors)



### Ordering Information

**3614SR1 - HH (XX) - AAA B**

1
2
3
4
5

#### 1. Connector Series

#### 2. (H) Hauteur isolant

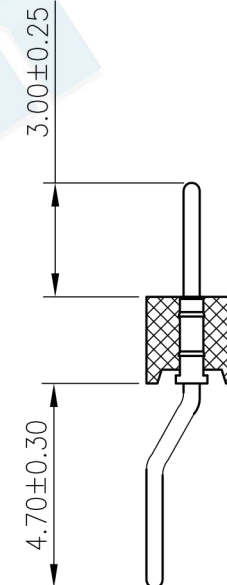
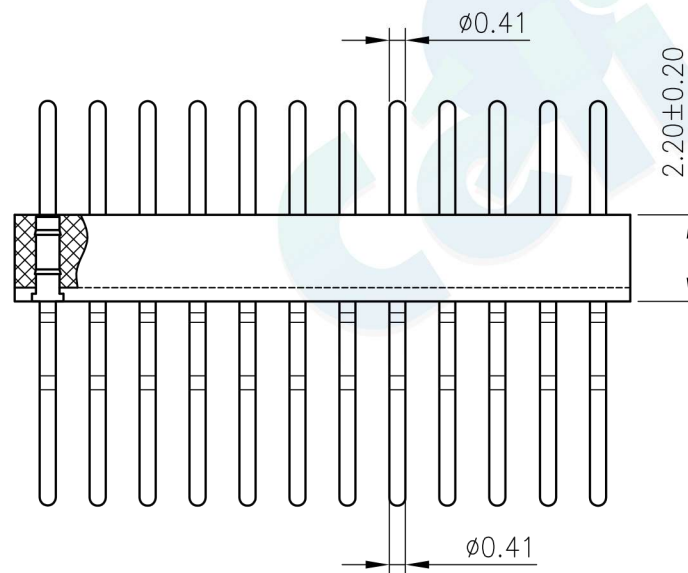
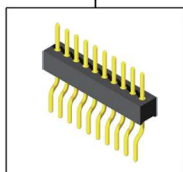
- H = 16 (Hauteur isolant : 1.6mm)
- H = 22 (Hauteur isolant : 2.22mm)

#### 3. Number of pins per row

#### 4. Pin Length (101 = 10.1mm)

#### 5. Contact Plating

- A = Tin
- B = Gold Flash (Standard\*)
- C = 2U" Gold
- D = 3U" Gold
- E = 5U" Gold
- F = 10U" Gold
- G = Gold Flash/Tin



				OPERATION		DRAW	BEN	12.04.18	SCALE	FIT
				X.X	±0.30				UNIT	mm
				X.XX	±0.20	CHECK			SIZE	A4
				X.XXX	±0.10				SHEET	1/1
A0	2012.04.18	NEW DRAWING		Angle	±3°	APPROVE			PROJ.	
REV	DATE	MODIFICATION DESCRIPTION		DIM	TOL					



PART NO.	3614SR1 - XXXX - XXXX
TITLE:	1.27X2.2 Machine Pin Header 90° SMT L=10.1mm