

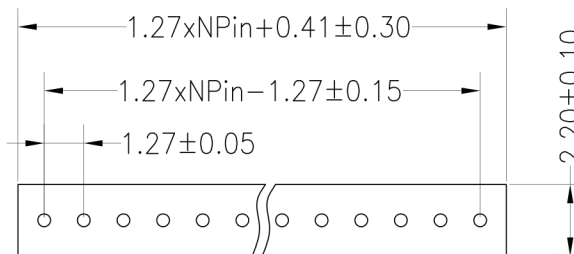
ROUND PIN HEADER DIP SINGLE ROW

3614 SERIES - 1.27MM PITCH



Technical Data

- Insulator : Black Glass filled polyester PPS-GF30-FR
- Flammability : UL94V-O
- Sleeve : Brass
- Accepted pin : $\varnothing 0.41\text{mm}$
- Mechanical life : min 500 cycles
- Rated current : 1A
- Dielectric resistance : Min 1000V RMS
- Coplanarity SMD
- Terminations : Max 0.1mm (measured on 25mm long connectors)



Ordering Information

3614D1 - HH (XX) - AAA B 01*

1. Connector Series

2. (H) Hauteur isolant

- H = 16 (Hauteur isolant : 1.6mm)
- H = 22 (Hauteur isolant : 2.22mm)

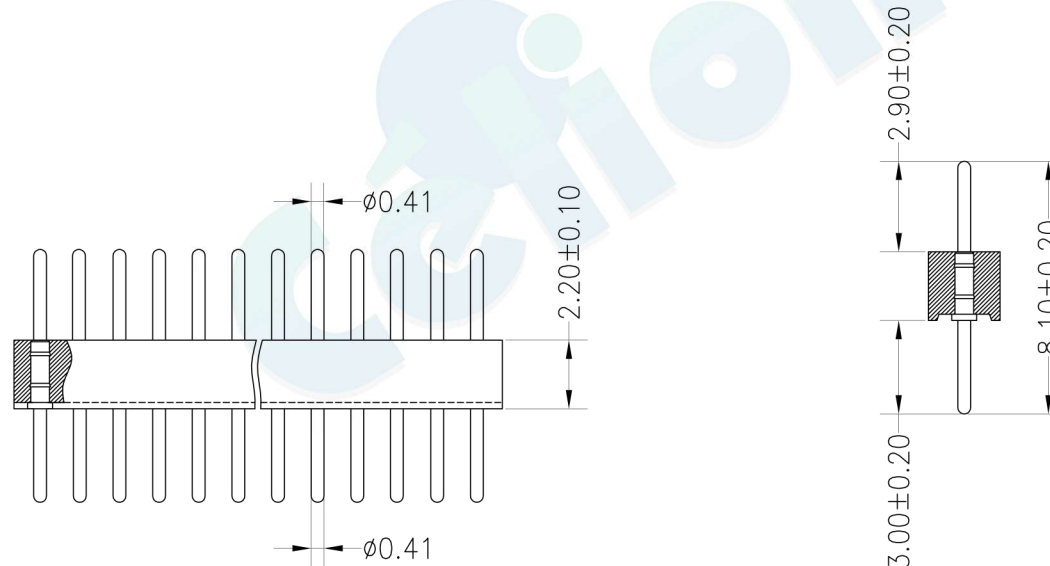
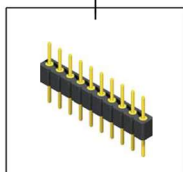
3. Number of pins per row


4. Pin Length (081 = 8.1mm)

5. Contact Plating

- A = Tin
- B = Gold Flash (Standard*)
- C = 2U" Gold
- D = 3U" Gold
- E = 5U" Gold
- F = 10U" Gold
- G = Gold Flash/Tin

(01)* = Type 1



				OPERATION		DRAW	BEN	12.04.18	SCALE	FIT	 votre partenaire en électronique	
				X.X	±0.30				UNIT	mm		
				X.XX	±0.20	CHECK			SIZE	A4	PART NO.	3614D1 - XXXX - XXXX 01
				X.XXX	±0.10				SHEET	1/1		
A0	2012.04.18	NEW DRAWING		Angle	±3°	APPROVE			PROJ.	◆	TITLE:	1.27*2.2mm Machine Pin Header 180° L=8.10
REV	DATE	MODIFICATION DESCRIPTION		DIM	TOL							

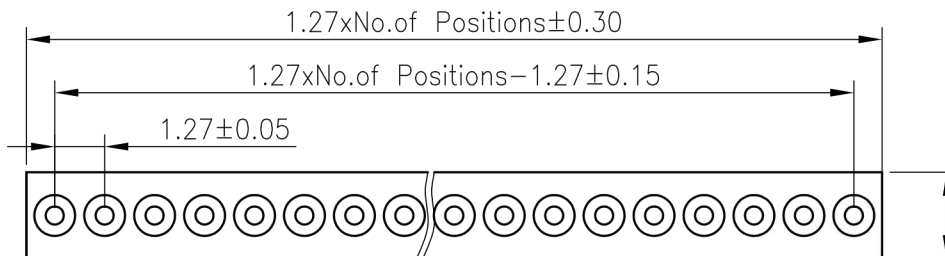
ROUND PIN HEADER DIP SINGLE ROW

3614 SERIES - 1.27MM PITCH



Technical Data

- Insulator : Black Glass filled polyester PPS-GF30-FR
- Flammability : UL94V-O
- Sleeve : Brass
- Accepted pin : $\varnothing 0.41\text{mm}$
- Mechanical life : min 500 cycles
- Rated current : 1A
- Dielectric resistance : Min 1000V RMS
- Coplanarity SMD
- Terminations : Max 0.1mm (measured on 25mm long connectors)



Ordering Information

3614D1 - HH (XX) - AAA B 02*

1. Connector Series

2. (H) Hauteur isolant

- H = 16 (Hauteur isolant : 1.6mm)
- H = 22 (Hauteur isolant : 2.22mm)

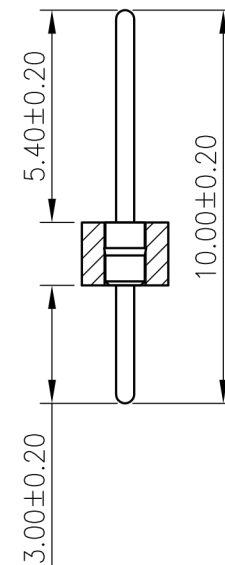
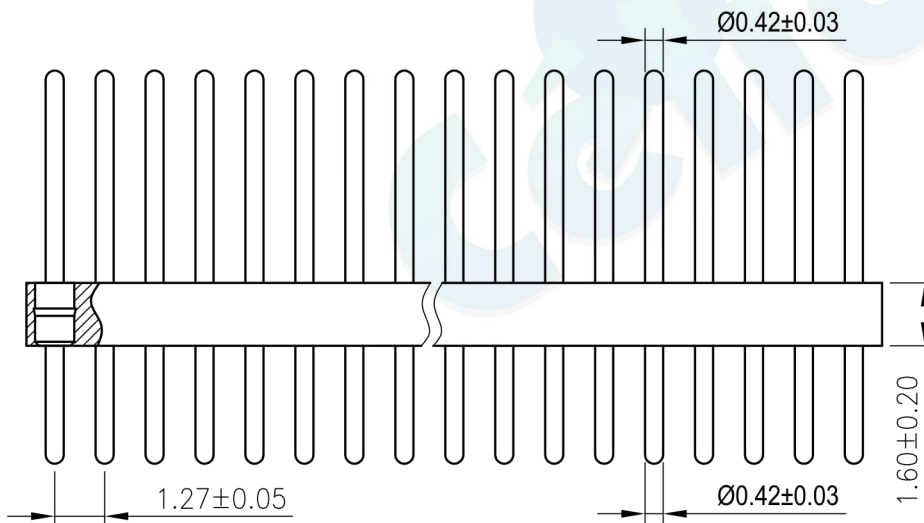
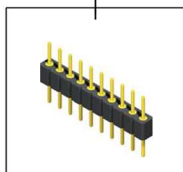
3. Number of pins per row

4. Pin Length (081 = 8.1mm)

5. Contact Plating

- A =Tin
- B =Gold Flash (Standard*)
- C= 2U" Gold
- D= 3U" Gold
- E= 5U" Gold
- F= 10U" Gold
- G=Gold Flash/Tin

(02)* = Type 2



				OPERATION		DRAW	BEN	12.04.18	SCALE	FIT	 votre partenaire en électronique		
				X.X	±0.30				UNIT	mm			
				X.XX	±0.20	CHECK		SIZE	A4	PART NO.			3614D1 - XXXX - XXXX 02
				X.XXX	±0.10	APPROVE		SHEET	1/1	TITLE:			1.27X1.6 Machine Pin Header 180° L=10.0mm
REV	DATE	MODIFICATION DESCRIPTION	CHANGE	DIM	TOL			PROJ.					