

ROUND PIN HEADER SMT SINGLE ROW

3610 SERIES - 2.54MM PITCH



Materials

- Pin: Brass, machined (H59-3)
- Plating: Gold plated: 1.25u"m/50u"nickel, full gold
- Insulator body (black): PPS (UL94V-0)

Mechanical

- Operating temperature: Gold plated: -55°C to +105°C (Continuous)
-67"H to +105"H
- Tin Plated: -40°C to 105°C
- Soldering temperature: 260°C, 10s max

Electrical

- Current rating: 3Amps/contact max.
- Contact resistance: 20mΩ
- Insulation resistance: 1000MΩ
- Operating voltage: 60 AC/DC

Ordering Information

3610S1 - 30 (XX) - AAA B

1
2
3
4
5

1. Connector Series

2. (H) Hauteur isolant

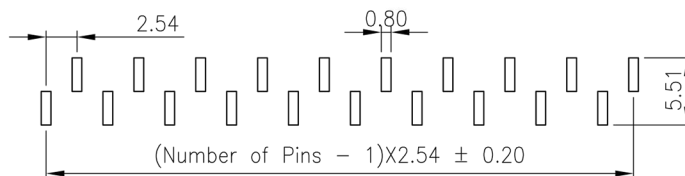
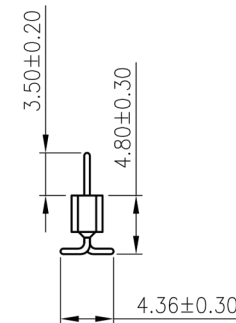
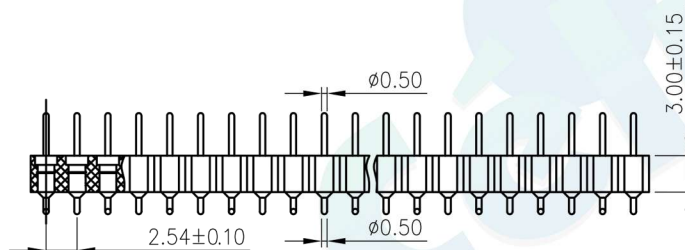
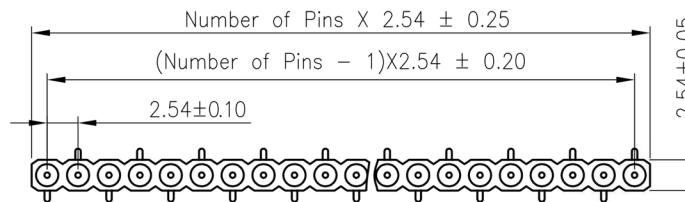
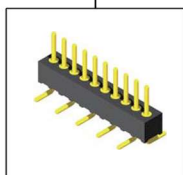
- H = 30 (Hauteur isolant : 3.0mm)

3. Number of pins per row

4. Pin Length (100 = 10.0mm)

5. Contact Plating

- A =Tin
- B =Gold Flash
- C = 1.5U" Gold
- D = 2U" Gold
- E = 3U" Gold
- F = 5U" Gold
- G =Gold Flash/Tin (Standard*)



P.C.B LAYOUT

				OPERATION		DRAW	BEN	12.04.18	SCALE	FIT	votre partenaire en électronique		
				X.X	±0.30				UNIT	mm			
				X.XX	±0.20	CHECK	SIZE	A4	PART NO.	3610S1 - 30XX - XXXX			
				X.XXX	±0.10	APPROVE	SHEET	1/1	TITLE:	2.54X3.0 SMT L=10.0			
REV	DATE	MODIFICATION DESCRIPTION	CHANGE	DIM	TOL			PROJ.					