

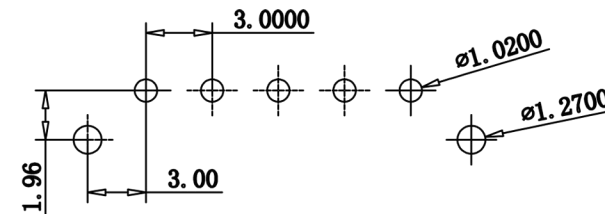
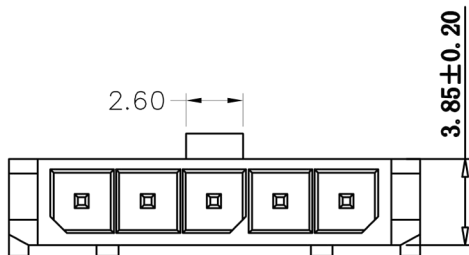
# WAFER CONNECTOR DIP TYPE

3001 SERIES - 3.00MM



## Specifications

- Rated current: 5.0AMP
- Voltage rating: 250V AC/DC
- Contact resistance: 20mΩ max
- Withstand Voltage: 1500V AC/minute
- Insulation resistance: 1000MΩ min
- Operation temperature: -40°C to +105°C
- Contact material: Brass
- Contact plating: Tin Over Ni
- Solder Tabs material: Brass/Tin plated
- Insulator material: Polyester (UL94V-0)
- Standard: PA6T
- Max. processing Temp: 230°C for 30-60 seconds  
260°C for 10 seconds



P. C. B. LAYOUT

## Ordering Information

**3001D1 - (XX) X X (1)**  
1 2 3 4

1. Connector Series
2. Number of pins per row (02→12)
3. Insulator Material Option

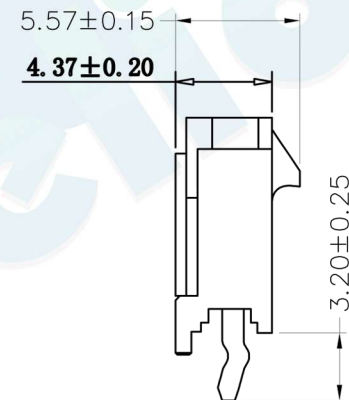
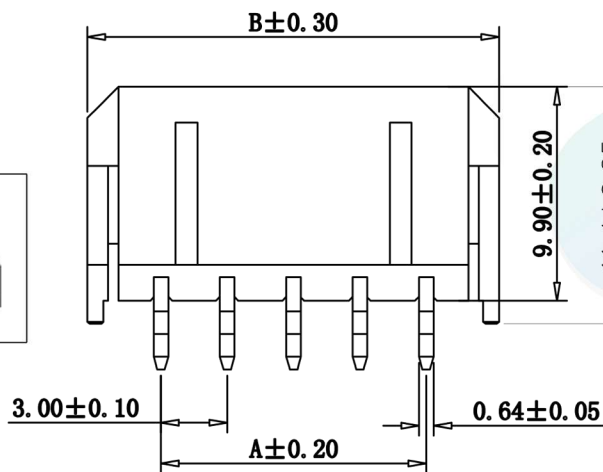
- A = BK-PA6T
- B = BK-PA9T
- C = BK-LCP

### 4. Contact plating

- A = Gold Flash
- B = Gold Flash/Tin
- C = Tin
- D = Matte-Tin

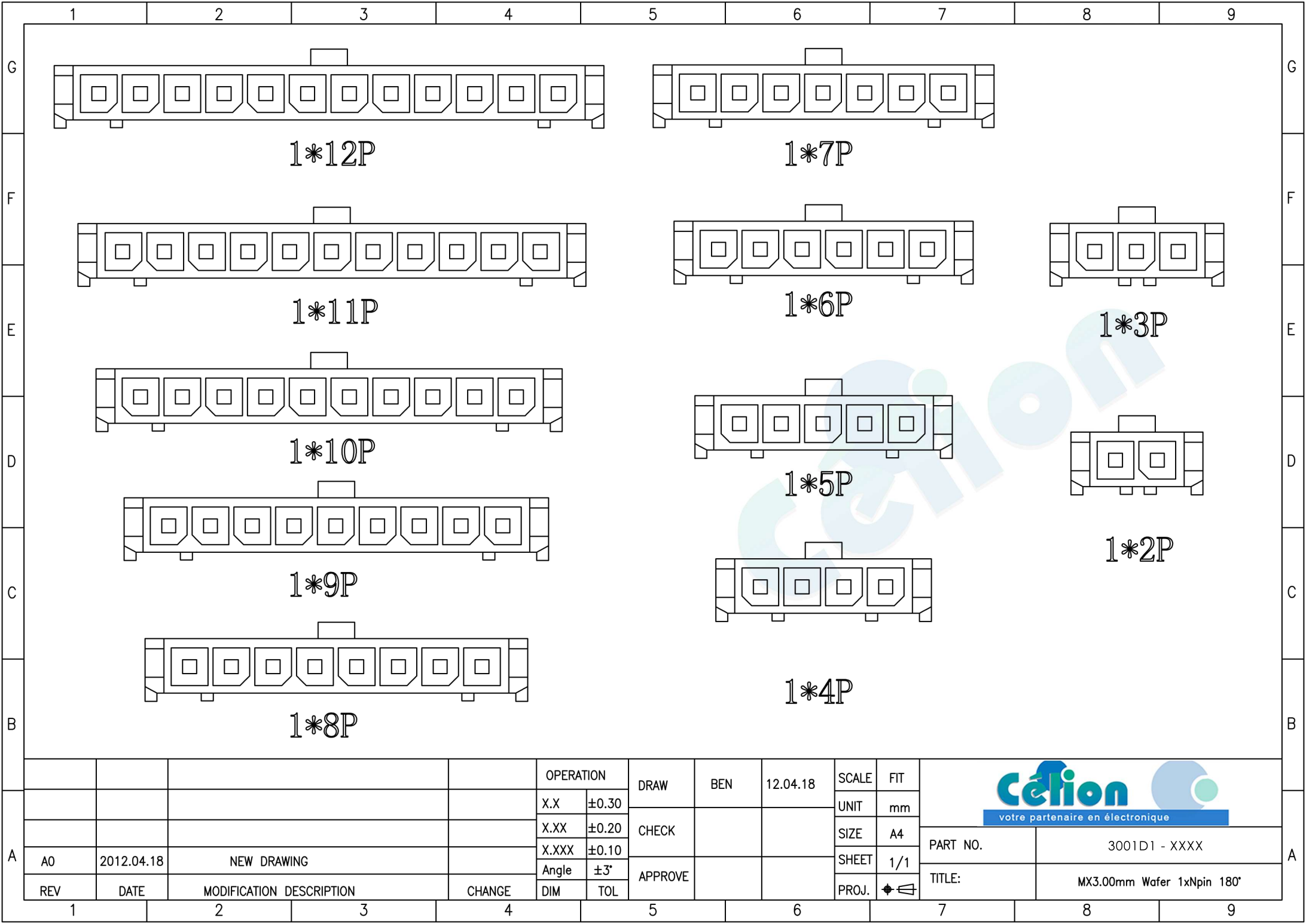
### (1). Packaging

Ø=Pe Bag 1=Tube 2=Reel



Circuit	Dimension	
	A	B
02	3.00	9.65
03	6.00	12.65
04	9.00	15.65
05	12.00	18.65
06	15.00	21.65
07	18.00	24.65
08	21.00	27.65
09	24.00	30.65
10	27.00	33.65
11	30.00	36.65
12	33.00	39.65

				OPERATION		DRAW	BEN	12.04.18	SCALE	FIT	votre partenaire en électronique	
				X.X	±0.30							
				X.XX	±0.20	APPROVE			SIZE	A4	PART NO.	3001D1 - XXXX
A0				X.XXX	±0.10							
REV	DATE	MODIFICATION DESCRIPTION	CHANGE	DIM	TOL	PROJ.						



1\*12P

1\*7P

1\*11P

1\*6P

1\*3P

1\*10P

1\*5P

1\*2P

1\*9P

1\*4P

1\*8P



				OPERATION		DRAW	BEN	12.04.18	SCALE	FIT	votre partenaire en électronique		
				X.X	±0.30				UNIT	mm			
				X.XX	±0.20	CHECK		SIZE	A4	PART NO.			3001D1 - XXXX
				X.XXX	±0.10	APPROVE		SHEET	1/1	TITLE:			MX3.00mm Wafer 1xNpin 180°
REV	DATE	MODIFICATION	DESCRIPTION	CHANGE	Angle	±3°			PROJ.				
					DIM	TOL							