

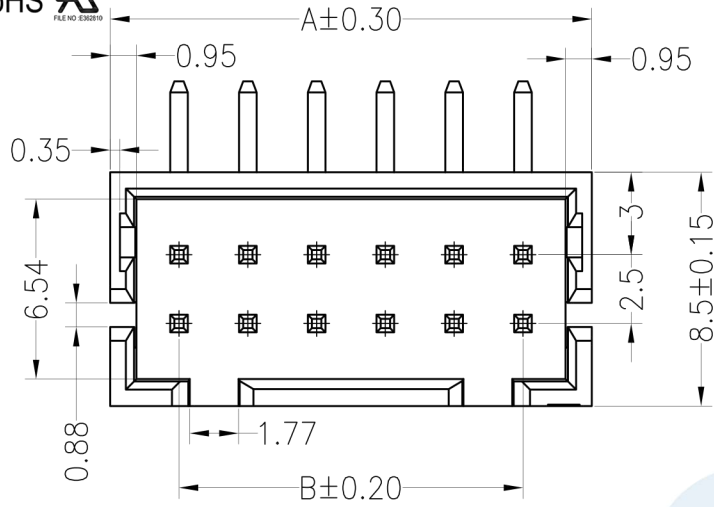
WAFER CONNECTOR DIP RIGHT ANGLE

2500 SERIES - 2.50MM

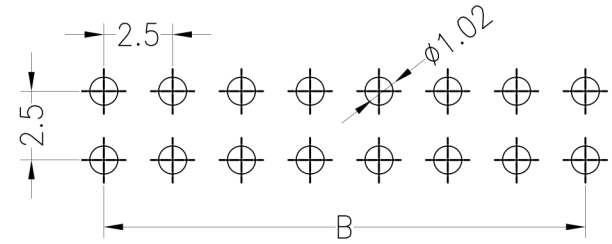


Specifications

- Rated current: 3.0AMP
- Contact resistance: 30mΩ max
- Withstand Voltage: 650V AC/minute
- Insulation resistance: 1000MΩ min
- Operation temperature: -40°C to +105°C
- Contact material: Brass
- Contact plating: Au(0.8u") Over Ni
- Insulator material: Polyester (UL94V-0)
- Standard: PBT
- Max. processing Temp: 180°C for 30-60 seconds
200°C for 10 seconds



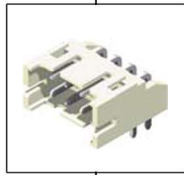
Recommended P.C.B Layout (Top Side)
(PCB BOARD TOLERANCE ±0.05)



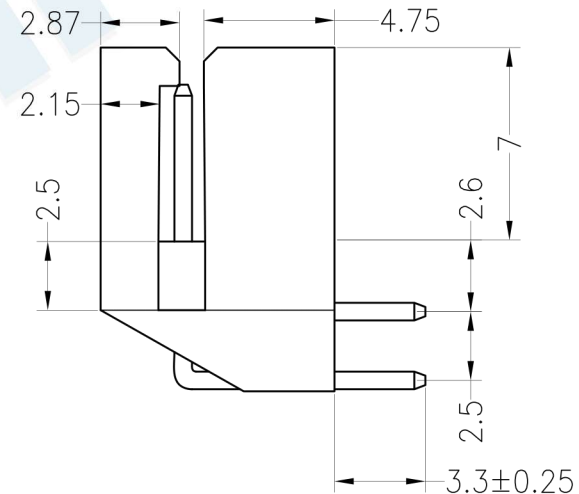
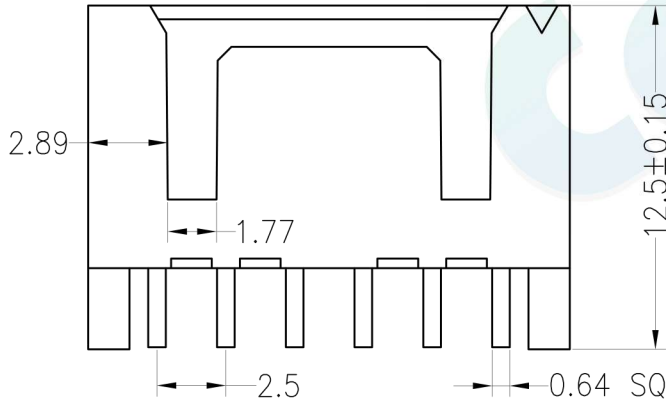
Ordering Information

2500DR2 - (XX) X

1. Connector Series
2. Number of pins per row
3. Color
 - W = White



Position	Dimension mm	
	A	B
2x4	12.5	7.50
2x6	17.5	12.5
2x7	20.0	15.0
2x8	22.5	17.5
2x9	25.0	20.0
2x12	32.5	27.5



				OPERATION		DRAW	BEN	12.04.18	SCALE	FIT	votre partenaire en électronique	
				X.X	±0.30							
				X.XX	±0.20	APPROVE			SIZE	A4	PART NO.	2500DR2 - XXX
				Angle	±3°				SHEET	1/1		
REV	DATE	MODIFICATION DESCRIPTION	CHANGE	DIM	TOL			PROJ.				