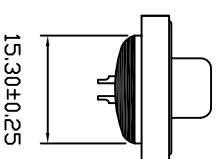
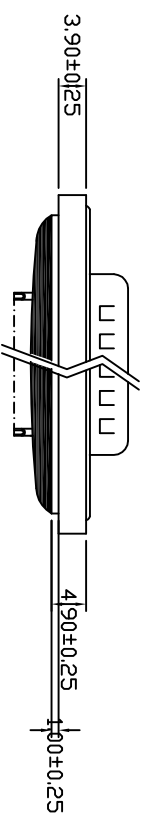
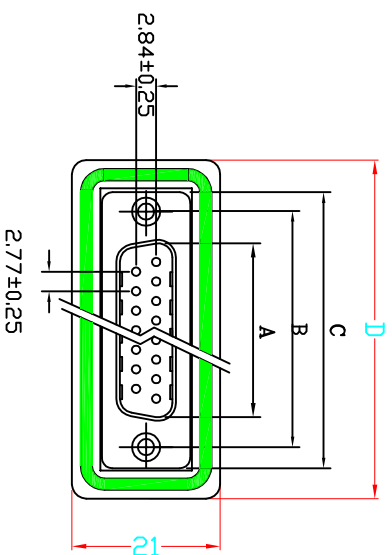


No. of Contact	A ± 0.25	B ± 0.13	C ± 0.38	D ± 0.25
09	16.92	24.99	30.81	39.6
15	25.25	33.32	39.14	48
25	38.96	47.04	53.04	61.6
37	55.42	63.50	69.32	78



MATERIALS AND FINISH

SHELL : STEEL MATERIAL, FRONT NICKEL FINISHED
 BACK SHELL TIN FINISHED
 INSULATOR : PBT THERMOPLASTIC, 30% GLASS
 FILLED, UL 94V-0 RATED,
 CONTACT MATERIAL : BRASS
 CONTACT FINISH : FULL GOLD FINISHED
 WITH #4-40 THREADED RIVETS
 Protection grade : Ingress Protection ; Environmental IP67

ELECTRICAL CHARACTERISTICS

CONTACT CURRENT RATING : 5.0 AMPS
 CONTACT RESISTANCE : 30 MILLIOHMS MAX.
 DIELECTRIC WITHSTANDING VOLTAGE : 1000 V AC MIN.
 INSULATION RESISTANCE : 5000 MEGOHMS MIN.
 TEMPERATURE RATING : $-55^{\circ}\text{C} \sim +105^{\circ}\text{C}$
 GRADE:IP67

<p style="text-align: center;">CELION SAS</p>		Drawn by	liuqiang	2006.05.10
		Designed by	liuqiang	2006.05.10
<p style="text-align: center;">D-sub, Machine Pin, Solder Type Straight</p>		Approved by	yangjinguo	2006.05.10
		Sheet 1 of 1	Code 000	Scale 1:1
Dimensions in mm.(inches)		Tolerances on:XX+ \-0.13		
Ver A0	Part No.	1166-0XX-101-000		